



1460 Protector

Sensitive equipment needs protection, and since 1976 the answer has been the Peli™ Protector Case. These cases are designed rugged, and travel the harshest environments on earth. Against the extreme cold of the arctic or the heat of battle, Peli cases have survived. Made in the USA, these tough cases are designed with an automatic purge valve, that equalizes air pressure, a watertight silicone O-ring lid, over-molded rubber handles and stainless steel hardware.

- Also available with EMS Organizer and Dividers
- **Top lid opens up to 180° for on-the-field anti-roll stability when open**
- **Watertight, crushproof, and dustproof**
- Automatic pressure equalization valve - balances interior pressure, keeps water out
- Comfortable rubber over-molded handles
- Easy open double-throw latches
- O-ring seal
- Open cell core with solid wall design - strong, light weight
- Stainless steel hardware and padlock protectors
- Peli's legendary lifetime guarantee**
- * Where applicable by law



CONFIGURATIONS



1460
Standard



1460AALG
With Custom Foam for 9430 / 9435



1460NF
No Foam



1460WF
With Foam

DIMENSIONS

Interior (LxWxD)	18.54 x 9.92" x 10.92 (47.1 x 25.2 x 27.7 cm)
Exterior (LxWxD)	20.85 x 12.73" x 12.75 (53 x 32.3 x 32.4 cm)
Lid Depth	4.91" (12.5 cm)
Bottom Depth	6.01" (15.3 cm)
Total Depth	10.92" (27.7 cm)
Int Volume	1.16 ft³ (0.033 m³)
Padlock Hole Diameter	0.31" (0.8 cm)

MATERIALS

Body	Polypropylene
Latch	EXL
O-Ring	Polymer
Pins	Stainless Steel

Foam	Polyurethane
Purge Body	ABS
Purge Vent	3 Micron Hydrophobic Non-Woven

COLOURS

■ Black

WEIGHT

Weight With Foam	12.48 lbs (5.7 kg)
Weight Empty	8.75 lbs (4 kg)
Buoyancy	82.00 lbs (37.2 kg)

TEMPERATURE

Minimum Temperature	-40°F (-40 °C)
Maximum Temperature	190°F (87.8 °C)

CERTIFICATIONS

IP67

OTHER

Military	yes
-----------------	-----

ACCESSORIES



1461
6 pc. Replacement Foam Set



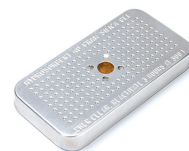
1463
Replacement O-ring



1507
Quick Mounts - set of 4



1506TSA
TSA Lock



1500D
Desiccant Silica Gel

Peli

c/ Provença, 388, Planta 7 • Barcelona, Spain 08025 • Phone: +34 934 674 999
info@peli.com • www.peli.com

Document created on 09-09-25