



1606

Air

Peli understands that finding the right protection, with the perfect fit for your gear, is a priority. Peli™ Air began with long protection and quickly grew to offer you deep protection. The time has come to combine those two in order to create Peli's new Long/Deep Series. Gone are the days of dangerously forcing your equipment into the wrong size case or leaving it unprotected with no other options. With Peli's Long/Deep series, we've created the missing link so that no matter the demands of your gear, Peli has you covered.

- Automatic pressure equalization valve - balances interior pressure, keeps water out
- Fold down over-molded handle
- Retractable extension trolley handle
- Stainless steel padlock protectors
- Business card holder
- Quiet rolling stainless-steel bearing wheels
- Press and Pull™ Latches
- Limited Lifetime Warranty
- Super-light proprietary HPX²™ Polymer - up to 40% lighter
- Waterproof O-ring seal
- User-customizable Pick N Pluck™ foam
- Waterproof, crushproof, dustproof
- IP67 & MIL-SPEC certified



CONFIGURATIONS



1606
Standard



1606WF
With Foam



1606NF
No Foam

DIMENSIONS

Interior (L×W×D)	24.54 x 12.30" x 10.22 (62.3 x 31.2 x 26 cm)
Exterior (L×W×D)	27.42 x 15.13" x 11.83 (69.6 x 38.4 x 30 cm)
Lid Depth	2.00" (5.1 cm)
Bottom Depth	8.22" (20.9 cm)
Total Depth	10.22" (26 cm)
Int Volume	1.79 ft ³ (0.051 m ³)
Padlock Hole Diameter	0.31" (0.8 cm)

MATERIALS

Body	Proprietary Polypropylene Blend
Latch	ABS
O-Ring	EPDM
Purge Body	ABS

Purge Vent

Hi-Flow Gore-Tex 3 Micron Hydrophobic Non-Woven

COLOURS

■ Black

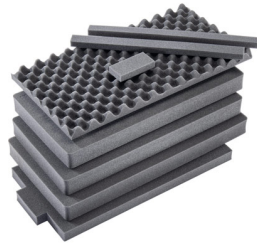
WEIGHT

Weight With Foam 14.67 lbs (6.65 kg)
Weight Empty 12.45 lbs (5.65 kg)
Buoyancy 123.70 lbs (56.11 kg)

TEMPERATURE

Minimum Temperature 0°F (-17.8 °C)
Maximum Temperature 140°F (60 °C)

ACCESSORIES



1606AirFS
8 pc. Replacement Foam Set



AIRHANDL
EZ-Pull Multi-Stage Air Handle

Peli

c/ Provença, 388, Planta 7 • Barcelona, Spain 08025 • Phone: +34 934 674 999
info@peli.com • www.peli.com

Document created on 04-26-26