



EU035035-1010

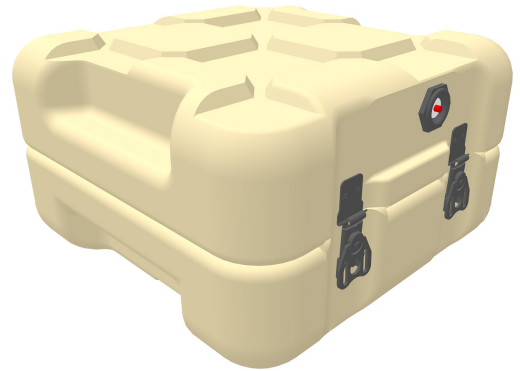
ISP2 Case

Shifting loose cargo can slow down your ops and threaten the mission with damaged freight. The ISP² Case from Peli™ virtually eliminates load movement with a unique Inter-Stacking Pattern (ISP). The system is compatible across 64 different case sizes, from 0,018 to 0,576 cubic metres of storage. Equipped with a silicone sponge O-ring and pressure release valves, the ISP² Case is impervious to extreme weather and wet conditions.

The system is designed to maximize the volume of standard logistics platforms. Whether loading standard pallets, NATO pallets, JMIC containers, 463L pallets or sea containers, the ISP² Case system will make the most efficient use of cargo space.

With its Inter-Stacking Pattern, ISP2 Cases can be cubed out as a solid block. The 10x10cm squared pattern bottom matches with the cube pattern on the case below, literally falling and locking into place.

- Made in Europe
- Inter-stacking pattern to keep loads tight
- Maximizes the volume of standard logistics platforms
- Moulded-in, tongue-in-groove gasketed parting lines for splash resistance and tight seals, even after impact
- Positive anti-shear locks, which prevent lid separation after impact, and reduce stress on hardware



DIMENSIONS

| | |
|-------------------------|--|
| Interior (L×W×D) | 10.43 x 10.43" x 6.69 (26.5 x 26.5 x 17 cm) |
| Exterior (L×W×D) | 13.78 x 13.78" x 7.87 (35 x 35 x 20 cm) |
| Lid Depth | 3.94" (10 cm) |
| Bottom Depth | 3.94" (10 cm) |
| Total Depth | 7.88" (20 cm) |
| Int Volume | 0.42 ft ³ (0.012 m ³) |

MATERIALS

| | |
|-------------------|----------------------------------|
| Body | RotoMolded Polyethylene |
| Latch | Steel (Zinc Cobalt-Black-Plated) |
| O-Ring | Silicone Sponge |
| Pins | Stainless Steel |
| Pins (Alt) | Aluminum |
| Purge Body | Mechanical PRV - Aluminum Body |

COLOURS

| | | | |
|-----------------------------|----------------------------------|------------------------------|-----------------------------|
| ■ Black - 032 Fed Std 27040 | ■ Olive Drab - 137 Fed Std 34096 | ■ Gray - 133 Fed Std 26270 | ■ Tan - 250 Fed Std 20372 |
| ■ Red - 130 Fed Std 21105 | ■ Blue - 135 Pantone 292U | ■ White - 132 Fed Std 27925 | ■ Yellow - 136 Pantone 012U |
| ■ Green - 138 Fed Std 24052 | ■ Orange - 134 Fed Std 12197 | ■ Yellow - 131 Fed Std 23538 | ■ Maroon - 197 Pantone 202U |
| ■ Blue - 101 Fed Std 25052 | | | |

WEIGHT

| | |
|---------------------|---------------------|
| Weight Empty | 7.72 lbs (3.5 kg) |
| Buoyancy | 43.61 lbs (19.8 kg) |

TEMPERATURE

| | |
|----------------------------|----------------|
| Minimum Temperature | -22°F (-30 °C) |
| Maximum Temperature | 158°F (70 °C) |

Peli

c/ Provença, 388, Planta 7 • Barcelona, Spain 08025 • Phone: +34 934 674 999
info@peli.com • www.peli.com

Document created on 09-15-25