



# 1745

## Air

Long Case

We've stretched out our line of Peli™ Air cases, so now you can protect your long equipment inside the world's toughest and lightest case. 44" long with built in wheels and 40% lighter than other polymer cases, the Peli™ Air 1745 case keeps you rolling and provides the perfect leg room to protect survey equipment, firearms, camera tripods and other lengthy equipment.

With 8" of internal space and available with two layers of custom foam\* (pelicanfoam.com) or standard issue Pick N Pluck™ foam, the Peli™ Air 1745 is our deepest long case that provides the option to stack multiple items on both bottom and top layers or just use the top layer to nestle long individual equipment.

The Peli™ Air 1745 case is also the first Peli™ Air case to feature Press and Pull™ latches, tested for extreme pressure and impact situations. These latches keep the lid shut through rough handling but are easy to open on arrival.

Peli™ Air 1745 case: The long haul just got easier.

- Automatic pressure equalization valve - balances interior pressure, keeps water out
- Fold down over-molded handle
- Stainless steel padlock protectors
- Business card holder
- Quiet rolling stainless-steel bearing wheels
- Press and Pull™ Latches
- Super-light proprietary HPX2™ Polymer - up to 40% lighter
- Waterproof O-ring seal
- User-customizable Pick N Pluck™ foam
- Waterproof, crushproof, dustproof
- IP67 & MIL-SPEC certified



## CONFIGURATIONS



**1745**  
Standard



**1745NF**  
No Foam



**1745WF**  
With Foam

## DIMENSIONS

|                              |  |
|------------------------------|--|
| <b>Interior (L×W×D)</b>      | 44.01 x 16.77" x 7.94 (111.8 x 42.6 x 20.2 cm) |
| <b>Exterior (L×W×D)</b>      | 46.69 x 19.36" x 8.73 (118.6 x 49.2 x 22.2 cm) |
| <b>Lid Depth</b>             | 2.51" (6.4 cm)                                 |
| <b>Bottom Depth</b>          | 5.43" (13.8 cm)                                |
| <b>Total Depth</b>           | 7.94" (20.2 cm)                                |
| <b>Int Volume</b>            | 3.39 ft <sup>3</sup> (0.096 m <sup>3</sup> )   |
| <b>Padlock Hole Diameter</b> | 0.31" (0.8 cm)                                 |

## MATERIALS

---

|                   |   |
|-------------------|---|
| <b>Body</b>       | Proprietary Polypropylene Blend                 |
| <b>Latch</b>      | ABS   |
| <b>O-Ring</b>     | EPDM  |
| <b>Purge Body</b> | ABS   |
| <b>Purge Vent</b> | Hi-Flow Gore-Tex 3 Micron Hydrophobic Non-Woven |

## COLOURS

---

■ Black

## WEIGHT

---

|                         |                     |
|-------------------------|---------------------|
| <b>Weight With Foam</b> | 21.06 lbs (9.55 kg) |
| <b>Weight Empty</b>     | 17.26 lbs (7.83 kg) |

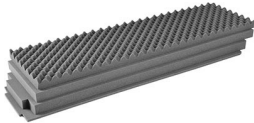
## TEMPERATURE

---

|                            |                |
|----------------------------|----------------|
| <b>Minimum Temperature</b> | 0°F (-17.8 °C) |
| <b>Maximum Temperature</b> | 140°F (60 °C)  |

## ACCESSORIES

---



**1745AirFS**  
4 pc. Pick N Pluck™ Foam Set



**LGMT-001A**  
Air Case Roof Mount



**RucPac-Pro-1**  
RucPac Pro Hardcase Backpack Conversion

---

### Peli

c/ Provença, 388, Planta 7 • Barcelona, Spain 08025 • Phone: +34 934 674 999  
[info@peli.com](mailto:info@peli.com) • [www.peli.com](http://www.peli.com)

*Document created on 05-04-26*