



# 1535TRVL

## Air

### Travel Case

Stop rummaging through old luggage at check-in lines or remote base camps and travel smarter with Peli™ Air Travel Cases. Lid organizers have zippered compartments for stowing larger items and see-through mesh pockets secure passports and cables. Packing cubes keep gear tightly bundled and allow you to arrange your gear by stacking or grouping side by side. Peli™ Air Travel Cases are also built for versatility. Just remove the packing cubes and replace with optional Trekpak™ dividers, padded dividers or Pick N Pluck™ foam interior solutions (available separately).

- Automatic pressure equalization valve - balances interior pressure, keeps water out
- Fold down over-molded handle
- Retractable extension trolley handle
- Stainless steel padlock protectors
- Business card holder
- Quiet rolling stainless-steel bearing wheels
- Press and Pull™ Latches
- Lid Mesh and Zippered Storage Compartments
- Packing Cube Organizers
- Press and Pull Latches with TSA Key Locks
- Super-light proprietary HPX<sup>2</sup>™ Polymer - up to 40% lighter
- Waterproof O-ring seal
- Waterproof, crushproof, dustproof
- IP67 & MIL-SPEC certified
- Limited Lifetime Warranty (Where applicable by law)
- Dimensions compatible with the maximum allowed onboard luggage size of most international airlines.
- Verify with your airline the exact size requirements for onboard luggage.



## DIMENSIONS

<b>Interior (L×W×D)</b>	20.39 x 11.20" x 7.21 (51.8 x 28.4 x 18.3 cm)
<b>Exterior (L×W×D)</b>	21.96 x 13.97" x 8.98 (55.8 x 35.5 x 22.8 cm)
<b>Large Packing Cube (L×W×D)</b>	13.78 x 10.83" x 4.72 (35 x 27.5 x 12 cm)
<b>Small Packing Cube (L×W×D)</b>	5.31 x 10.83" x 4.72 (13.5 x 27.5 x 12 cm)
<b>Lid Depth</b>	2.00" (5.1 cm)
<b>Bottom Depth</b>	5.21" (13.2 cm)
<b>Total Depth</b>	7.21" (18.3 cm)
<b>Int Volume</b>	0.95 ft <sup>3</sup> (0.027 m <sup>3</sup> )
<b>Large Packing Cube Volume</b>	0.41 ft <sup>3</sup> (0.012 m <sup>3</sup> )
<b>Small Packing Cube Volume</b>	0.16 ft <sup>3</sup> (0.005 m <sup>3</sup> )
<b>Padlock Hole Diameter</b>	5/16" (12.7 cm)

## MATERIALS

<b>Body</b>	Proprietary Polypropylene Blend
<b>Latch</b>	ABS
<b>O-Ring</b>	EPDM
<b>Purge Body</b>	ABS
<b>Purge Vent</b>	Hi-Flow Gore-Tex 3 Micron Hydrophobic Non-Woven

## COLOURS

■ Black

■ Charcoal

■ Indigo

■ Oxblood

## WEIGHT

**Weight** 10.35 lbs (4.69 kg)

**Weight With Organizers** 12.10 lbs (5.49 kg)

## TEMPERATURE

**Minimum Temperature** 0°F (-17.8 °C)

**Maximum Temperature** 140°F (60 °C)

## OTHER

**Wheels** 2

## ACCESSORIES



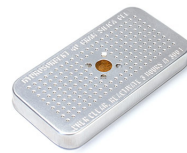
**RucPac-Pro-1**  
RucPac Pro Hardcase  
Backpack Conversion



**RucPac-normal**  
RucPac Standard Hardcase  
Backpack Conversion



**1506TSA**  
TSA Lock



**1500D**  
Desiccant Silica Gel



**AIRHANDL**  
EZ-Pull Multi-Stage Air Handle

### Peli

c/ Provença, 388, Planta 7 • Barcelona, Spain 08025 • Phone: +34 934 674 999  
[info@peli.com](mailto:info@peli.com) • [www.peli.com](http://www.peli.com)

Document created on 01-18-26