



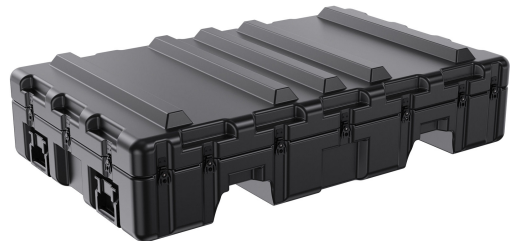
AL5632-0404FT

For over 65 years Peli's roto-molded cases have been relied upon for an unmatched range of engineered solutions for the Military and Medical, Telecommunications and High Tech industries. Peli offers over 350 case sizes with unlimited case configurations using standard case options. Either build your own case or our engineers will customize a solution specific to your performance requirements.

Our roto molded cases pass MIL-STD 810D and E, MIL-STD 810E MIL-STD-210C, ASTM E96; FED-STD-101 and ATA 300 testing.

This level of performance ensures your equipment is safe from any unforeseen elements when deploying, transporting or storing your most valuable assets.

- Hardware attaches to molded-in metal inserts to provide pull-out strength and load spreading so hardware never fails.
- Molded-in ribs and corrugations offer case strength for secure and heavy weight stacking capacity
- Recessed hardware, with its engineered shoulder geometry, reduces shear forces that prevents lid separation after impact and controls pressure on the gasket to maintain a weatherproof seal
- Reinforced corners and edges for additional impact protection
- Molded-in ribs and corrugations for secure, non-slip stacking, columnar strength, and added protection
- One-piece construction, molded from lightweight, high-impact polyethylene



DIMENSIONS

Interior (L×W×D)	56.05 x 32.42" x 8.31 (142.4 x 82.3 x 21.1 cm)
Exterior (L×W×D)	59.06 x 35.43" x 14.00 (150 x 90 x 35.6 cm)
Lid Depth	3.88" (9.9 cm)
Bottom Depth	3.98" (10.1 cm)
Total Depth	7.86" (20 cm)
Int Volume	8.74 ft ³ (0.247 m ³)

MATERIALS

Body	RotoMolded Polyethylene
Latch	Steel (Nickel-black Plated)
O-Ring	Silicone Sponge
Foam	No Foam, empty case standard Optional PE and PU, 1 and 2 lb. options filled and lined
Purge Body	Aluminum
Handle	Heavy Duty Injection Molded Standard
Hardware	Yellow Carbon Steel Standard

COLOURS

■ Gray - 133 Fed Std
26270

WEIGHT

Weight	55.59 lbs (25.2 kg)
---------------	---------------------

TEMPERATURE

Minimum Temperature	-20°F (-28.9 °C)
Maximum Temperature	140°F (60 °C)

OTHER

Military	yes
-----------------	-----

Peli
c/ Provença, 388, Planta 7 • Barcelona, Spain 08025 • Phone: +34 934 674 999
info@peli.com • www.peli.com

Document created on 09-09-25