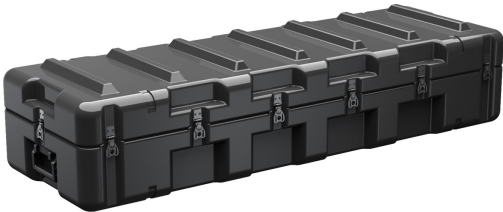




AL5616-0604

Trusted for over 40 years by the US Military, Single Lid Cases offer 20% more protective material in the edges and corners, where it is needed most, ensuring that valuable equipment is kept safe from any unforeseen elements. Available in several sizes, these cases are completely customizable with a wide range of bolt-on options like document holders, casters, humidity indicators and much more.

- Molded-in, tongue-in-groove gasketed parting lines for splash resistance and tight seals, even after impact
- Reinforced corners and edges for additional impact protection
- Molded-in ribs and corrugations for secure, non-slip stacking, columnar strength, and added protection
- Recessed hardware for extra protection
- Positive anti-shear locks, which prevent lid separation after impact, and reduce stress on hardware
- Patented molded-in metal inserts for catch and hinge attachment points, which provide strength and spread loads to the container
- One-piece construction, molded from lightweight, high-impact polyethylene



CONFIGURATIONS



AL5616-0604
Standard



AL5616-0604-RP
Empty

DIMENSIONS

| | |
|------------------|---|
| Interior (L×W×D) | 56.43 x 16.25" x 10.07 (143.3 x 41.3 x 25.6 cm) |
| Exterior (L×W×D) | 59.43 x 19.25" x 12.76 (151 x 48.9 x 32.4 cm) |
| Lid Depth | 4.20" (10.7 cm) |
| Bottom Depth | 5.87" (14.9 cm) |
| Total Depth | 10.07" (25.6 cm) |
| Int Volume | 5.34 ft ³ (0.151 m ³) |

MATERIALS

| | |
|------------|--|
| Body | RotoMolded Polyethylene |
| Latch | Steel (Nickel-black Plated) |
| O-Ring | Silicone Sponge |
| Foam | No Foam, empty case standard Optional PE and PU, 1 and 2 lb. options filled and lined |
| Purge Body | Aluminum |
| Handle | Heavy Duty Injection Molded Standard |
| Hardware | Yellow Carbon Steel Standard |

COLOURS

 Gray - 133 Fed Std
26270

WEIGHT

Weight 42.40 lbs (19.2 kg)
Buoyancy 485.02 lbs (220 kg)
Master Pack Weight 44.40 lbs (20.1 kg)

TEMPERATURE

Minimum Temperature -20°F (-28.9 °C)
Maximum Temperature 140°F (60 °C)

OTHER

Military yes

Peli

c/ Provença, 388, Planta 7 • Barcelona, Spain 08025 • Phone: +34 934 674 999
info@peli.com • www.peli.com

Document created on 05-01-24