



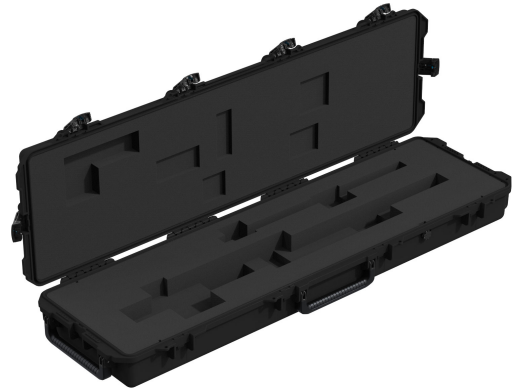
472-PWC-M240C

Mobile Armory™

Machine Gun Case

This Peli™ iM3300 case transports one M240C rifle or one M240C with infantry modification. This case is configured with a hinged lid, six Press & Pull™ latches, two padlockable hasps, two double-layered soft grip handles, a Vortex™ valve, and in-line wheels for easy transport.

- Six Press & Pull Latches
- Two Double-layered, Soft-grip Handles
- Two Padlockable Hasps
- In-line Wheels
- Vortex™ Valve
- Powerful Hinges
- Lightweight Strong HPX™ Resin
- Watertight, Dustproof and crushproof



DIMENSIONS

Interior (L×W×D)	50.50 x 14.00" x 6.00 (128.3 x 35.6 x 15.2 cm)
Exterior (L×W×D)	53.80 x 16.50" x 6.70 (136.7 x 41.9 x 17 cm)
Lid Depth	2.00" (5.1 cm)
Bottom Depth	4.00" (10.2 cm)
Total Depth	6" (15.2 cm)
Int Volume	2.45 ft ³ (0.069 m ³)

MATERIALS

Body	Injection Molded HPX™ high performance resin
Latch	Valox - Polybutylene Terephthalate (PBT)
Latch (Alt)	Xenoy - Polyester/Polycarbonate blend
O-Ring	Silicone Sponge
Pins	Stainless Steel
Foam	1.3/1.35 polyester
Purge Body	Valox - Polybutylene Terephthalate (PBT)
Purge Body (Alt)	Xenoy - Polyester/Polycarbonate blend
Purge Vent	Gortex membrane

COLOURS

 Black	 OD Green
---	--

WEIGHT

Weight	25.05 lbs (11.36 kg)
---------------	----------------------

TEMPERATURE

Minimum Temperature	-20°F (-28.9 °C)
Maximum Temperature	140°F (60 °C)

OTHER

Wheels

2

Peli

c/ Provença, 388, Planta 7 • Barcelona, Spain 08025 • Phone: +34 934 674 999
info@peli.com • www.peli.com

Document created on 05-03-26