



# 1556

## Air

Peli understands that finding the right protection, with the perfect fit for your gear, is a priority. Peli™ Air began with long protection and quickly grew to offer you deep protection. The time has come to combine those two in order to create Peli's new Long/Deep Series. Gone are the days of dangerously forcing your equipment into the wrong size case or leaving it unprotected with no other options. With Peli's Long/Deep series, we've created the missing link so that no matter the demands of your gear, Peli has you covered.

- Automatic Purge Valve - Keeps water and dust out while balancing air pressure
- Retractable extension handle
- Super-light proprietary HPX2™ Polymer
- Business card holder
- Quiet Rolling Stainless-Steel Bearing Wheels
- Does not meet airline requirements for carry-on



### CONFIGURATIONS



**1556**  
Standard

**1556WF**  
With Foam

**1556NF**  
No Foam

### DIMENSIONS

<b>Interior (LxWxD)</b>	21.63 x 10.76" x 8.97 (54.9 x 27.3 x 22.8 cm)
<b>Exterior (LxWxD)</b>	23.43 x 13.52" x 10.57 (59.5 x 34.3 x 26.8 cm)
<b>Lid Depth</b>	2.00" (5.1 cm)
<b>Bottom Depth</b>	6.97" (17.7 cm)
<b>Total Depth</b>	8.97" (22.8 cm)
<b>Int Volume</b>	1.21 ft <sup>3</sup> (0.034 m <sup>3</sup> )
<b>Padlock Hole Diameter</b>	5/16" (12.7 cm)

### MATERIALS

<b>Body</b>	Proprietary Polypropylene Blend
<b>Latch</b>	ABS
<b>O-Ring</b>	EPDM
<b>Purge Body</b>	ABS
<b>Purge Vent</b>	Hi-Flow Gore-Tex 3 Micron Hydrophobic Non-Woven

## COLOURS

---

■ Black

## WEIGHT

---

<b>Weight With Foam</b>	11.20 lbs (5.1 kg)
<b>Weight Empty</b>	9.75 lbs (4.4 kg)
<b>Buoyancy</b>	84.95 lbs (38.5 kg)

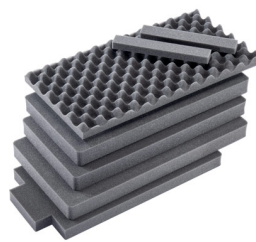
## TEMPERATURE

---

<b>Minimum Temperature</b>	-60°F (-51.1 °C)
<b>Maximum Temperature</b>	160°F (71.1 °C)

## ACCESSORIES

---



**1556AirFS**  
7 pc. Replacement Foam Set

---

### **Peli**

c/ Provença, 388, Planta 7 • Barcelona, Spain 08025 • Phone: +34 934 674 999  
[info@peli.com](mailto:info@peli.com) • [www.peli.com](http://www.peli.com)

*Document created on 10-18-21*