



# 1606

## Air

Peli understands that finding the right protection, with the perfect fit for your gear, is a priority. Peli™ Air began with long protection and quickly grew to offer you deep protection. The time has come to combine those two in order to create Peli's new Long/Deep Series. Gone are the days of dangerously forcing your equipment into the wrong size case or leaving it unprotected with no other options. With Peli's Long/Deep series, we've created the missing link so that no matter the demands of your gear, Peli has you covered.

- Automatic Purge Valve - Keeps water and dust out while balancing air pressure
- Retractable extension handle
- Super-light proprietary HPX2™ Polymer
- Business card holder
- Quiet Rolling Stainless-Steel Bearing Wheels
- Press and Pull™ Latches



### DIMENSIONS

<b>Interior (LxWxD)</b>	24.54 x 12.30" x 10.22 (62.3 x 31.2 x 26 cm)
<b>Exterior (LxWxD)</b>	27.42 x 15.13" x 11.83 (69.6 x 38.4 x 30 cm)
<b>Lid Depth</b>	2.00" (5.1 cm)
<b>Bottom Depth</b>	8.22" (20.9 cm)
<b>Total Depth</b>	10.22" (26 cm)
<b>Int Volume</b>	1.79 ft <sup>3</sup> (0.051 m <sup>3</sup> )
<b>Padlock Hole Diameter</b>	5/16" (12.7 cm)

### MATERIALS

<b>Body</b>	Proprietary Polypropylene Blend
<b>Latch</b>	ABS
<b>O-Ring</b>	EPDM
<b>Purge Body</b>	ABS
<b>Purge Vent</b>	Hi-Flow Gore-Tex 3 Micron Hydrophobic Non-Woven

### COLOURS

- Black

### WEIGHT

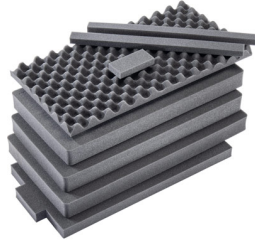
<b>Weight With Foam</b>	14.67 lbs (6.7 kg)
<b>Weight Empty</b>	12.45 lbs (5.6 kg)
<b>Buoyancy</b>	123.70 lbs (56.1 kg)

### TEMPERATURE

<b>Minimum Temperature</b>	-60°F (-51.1 °C)
<b>Maximum Temperature</b>	160°F (71.1 °C)

## ACCESSORIES

---



**1606AirFS**  
8 pc. Replacement Foam Set

---

### **Peli**

c/ Provença, 388, Planta 7 • Barcelona, Spain 08025 • Phone: +34 934 674 999  
[info@peli.com](mailto:info@peli.com) • [www.peli.com](http://www.peli.com)

*Document created on 05-20-22*