



## iM2300 Storm

The Peli™ Storm Case™ has the same legendary DNA as our Peli Protector Case, with one primary difference: A unique Press and Pull latch that locks automatically, but open with a light touch. Guaranteed for life, the Peli Storm case is made in the USA and engineered using the finest components.

- **Watertight, crushproof, and dustproof**
- Two Press & Pull Latches
- Two Padlockable Hasps
- Double-layered, Soft-grip Handle
- Vortex™ Valve
- Powerful Hinges
- Lightweight Strong HPX® Resin



### CONFIGURATIONS



**iM2300**  
Standard



**iM2300-X0000**  
No Foam



**iM2300-X0002**  
With Padded Dividers



**iM2300-X0001**  
With Foam

### DIMENSIONS

<b>Interior (L×W×D)</b>	17.00 x 11.70" x 6.20 (43.2 x 29.7 x 15.7 cm)
<b>Exterior (L×W×D)</b>	18.20 x 13.90" x 6.70 (46.2 x 35.3 x 17 cm)
<b>Lid Depth</b>	2.00" (5.1 cm)
<b>Bottom Depth</b>	4.20" (10.7 cm)
<b>Total Depth</b>	6.2" (15.7 cm)
<b>Int Volume</b>	0.71 ft <sup>3</sup> (0.02 m <sup>3</sup> )
<b>Padlock Hole Diameter</b>	0.28" (0.7 cm)

### MATERIALS

<b>Body</b>	Injection Molded HPX™ high performance resin
<b>Latch</b>	Valox - Polybutylene Terephthalate (PBT)
<b>Latch (Alt)</b>	Xenoy - Polyester/Polycarbonate blend
<b>O-Ring</b>	EPDM
<b>Pins</b>	Stainless Steel
<b>Pins (Alt)</b>	Aluminum
<b>Foam</b>	1.3/1.35 polyester
<b>Purge Body</b>	Valox - Polybutylene Terephthalate (PBT)
<b>Purge Body (Alt)</b>	Xenoy - Polyester/Polycarbonate blend
<b>Purge Vent</b>	Gortex membrane

## COLOURS

■ Black

■ OD Green

■ Yellow

## WEIGHT

<b>Weight With Foam</b>	7.10 lbs (3.22 kg)
<b>Weight Empty</b>	5.90 lbs (2.68 kg)
<b>Buoyancy</b>	45.64 lbs (20.7 kg)
<b>Master Pack Weight</b>	33.00 lbs (14.97 kg)

## TEMPERATURE

<b>Minimum Temperature</b>	-20°F (-28.9 °C)
<b>Maximum Temperature</b>	140°F (60 °C)

## CERTIFICATIONS

**IP67**

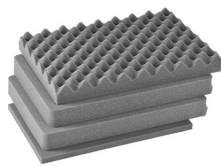
## OTHER

<b>Master Pack</b>	4
<b>Military</b>	yes

## ACCESSORIES



**iM2300-LIDORG**  
Lid Organizer



**iM2300-FOAM**  
4 pc. Replacement Foam Set



**iM2300-DIV**  
Padded Divider Set



**iM-STRAP-S-VER2**  
Padded Shoulder Strap



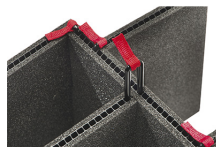
**iM-LIDSTAY**  
Lid Stay



**iM2300-M4-BEZEL-L**  
Lid Bezel Kit (Metric)



**iM2300-MBEZ-B**  
Base Bezel Kit (Metric)



**iM2300-TREK**  
TrekPak Case Divider Kit



**1525TPDIV**  
Extra TrekPak Dividers



**1506TSA**  
TSA Lock



**1500D**  
Desiccant Silica Gel



**iM2300TPDIV**  
Extra TrekPak Dividers

c/ Provença, 388, Planta 7 • Barcelona, Spain 08025 • Phone: +34 934 674 999  
[info@peli.com](mailto:info@peli.com) • [www.peli.com](http://www.peli.com)

*Document created on 06-13-26*