



1750

Protector

Long Case

Sensitive equipment needs protection, and since 1976 the answer has been the Peli™ Protector Case. These cases are designed rugged, and travel the harshest environments on earth. Against the extreme cold of the arctic or the heat of battle, Peli cases have survived. Made in the USA, these tough cases are designed with an automatic purge valve, that equalizes air pressure, a watertight silicone O-ring lid, over-molded rubber handles and stainless steel hardware.

- **Strong polyurethane wheels with stainless steel bearings**
- **Watertight, crushproof, and dustproof**
- 3-piece foam set
- Automatic pressure equalization valve - balances interior pressure, keeps water out
- Easy open double-throw latches
- Fold down handles
- O-ring seal
- Open cell core with solid wall design - strong, light weight
- Stainless steel hardware and padlock protectors



CONFIGURATIONS



1750
Standard



1750NF
No Foam



1750WF
With Foam

DIMENSIONS

Interior (L×W×D)	50.50 x 13.50" x 5.25 (128.3 x 34.3 x 13.3 cm)
Exterior (L×W×D)	53.00 x 16.00" x 6.12 (134.6 x 40.6 x 15.5 cm)
Lid Depth	1.75" (4.4 cm)
Bottom Depth	3.50" (8.9 cm)
Total Depth	5.25" (13.3 cm)
Int Volume	2.07 ft³ (0.059 m³)
Padlock Hole Diameter	5/16" (12.7 cm)

MATERIALS

Body	Polypropylene
Latch	ABS
O-Ring	Polymer
Pins	Stainless Steel
Foam	1.3 lb Polyurethane
Purge Body	ABS

Purge Vent

3 Micron Hydrophobic Non-Woven

COLOURS Black

WEIGHT

Weight With Foam	25.57 lbs (11.6 kg)
Weight Empty	23.59 lbs (10.7 kg)
Buoyancy	187.39 lbs (85 kg)
Master Pack Weight	25.65 lbs (11.6 kg)

TEMPERATURE

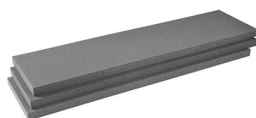
Minimum Temperature	-40°F (-40 °C)
Maximum Temperature	210°F (98.9 °C)

CERTIFICATIONS

IP67
Def Stan 81-41

OTHER

Wheels	2
Master Pack	1
Nameplate	yes
Military	yes

ACCESSORIES

1751
3 pc. Replacement Foam Set



1753
Replacement O-ring



1506TSA
TSA Lock



1500D
Desiccant Silica Gel

Peli

c/ Provença, 388, Planta 7 • Barcelona, Spain 08025 • Phone: +34 934 674 999
info@peli.com • www.peli.com

Document created on 05-09-24