



iM2306 Storm

The Peli™ Storm Case™ has the same legendary DNA as our Peli Protector Case, with one primary difference: A unique Press and Pull latch that locks automatically, but open with a light touch. Guaranteed for life, the Peli Storm case is made in the USA and engineered using the finest components.

- **Watertight, crushproof, and dustproof**
- Two Press & Pull Latches
- Two Padlockable Hasps
- Double-layered, Soft-grip Handle
- Vortex™ Valve
- Powerful Hinges
- Lightweight Strong HPX® Resin



CONFIGURATIONS



iM2306
Standard



iM2306-X0000
No Foam



iM2306-X0002
With Padded Dividers



iM2306-X0001
With Foam

DIMENSIONS

Interior (L×W×D)	17.00 x 6.30" x 6.20 (43.2 x 16 x 15.7 cm)
Exterior (L×W×D)	18.20 x 8.40" x 6.70 (46.2 x 21.3 x 17 cm)
Lid Depth	2.00" (5.1 cm)
Bottom Depth	4.20" (10.7 cm)
Total Depth	6.2" (15.7 cm)
Int Volume	0.38 ft ³ (0.011 m ³)
Padlock Hole Diameter	0.31" (0.8 cm)

MATERIALS

Body	Injection Molded HPX™ high performance resin
Latch	Valox - Polybutylene Terephthalate (PBT)
Latch (Alt)	Xenoy - Polyester/Polycarbonate blend
O-Ring	EPDM
Pins	Stainless Steel
Pins (Alt)	Aluminum
Foam	1.3/1.35 polyester
Purge Body	Valox - Polybutylene Terephthalate (PBT)
Purge Body (Alt)	Xenoy - Polyester/Polycarbonate blend
Purge Vent	Gortex membrane

COLOURS

■ Black

WEIGHT

Weight With Foam	4.70 lbs (2.13 kg)
Weight Empty	4.30 lbs (1.95 kg)
Buoyancy	24.25 lbs (11 kg)
Master Pack Weight	29.00 lbs (13.15 kg)

TEMPERATURE

Minimum Temperature	-20°F (-28.9 °C)
Maximum Temperature	140°F (60 °C)

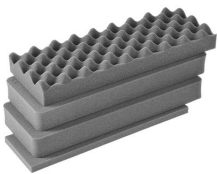
CERTIFICATIONS

IP67

OTHER

Master Pack	4
Military	yes

ACCESSORIES



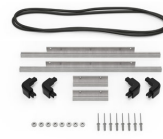
iM2306-FOAM
4 pc. Replacement Foam Set



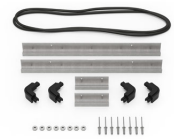
iM-STRAP-S-VER2
Padded Shoulder Strap



iM-LIDSTAY
Lid Stay



iM2306-M4-BEZEL-L
Lid Bezel Kit (Metric)



iM2306-MBEZ-B
Base Bezel Kit (Metric)



1506TSA
TSA Lock



1500D
Desiccant Silica Gel

Peli

c/ Provença, 388, Planta 7 • Barcelona, Spain 08025 • Phone: +34 934 674 999
info@peli.com • www.peli.com

Document created on 06-17-26