



# 1646

## Air

Peli understands that finding the right protection, with the perfect fit for your gear, is a priority. Peli™ Air began with long protection and quickly grew to offer you deep protection. The time has come to combine those two in order to create Peli's new Long/Deep Series. Gone are the days of dangerously forcing your equipment into the wrong size case or leaving it unprotected with no other options. With Peli's Long/Deep series, we've created the missing link so that no matter the demands of your gear, Peli has you covered.

- Automatic pressure equalization valve - balances interior pressure, keeps water out
- Fold down over-molded handle
- Retractable extension trolley handle
- Stainless steel padlock protectors
- Business card holder
- Quiet rolling stainless-steel bearing wheels
- Press and Pull™ Latches
- Limited Lifetime Warranty
- Super-light proprietary HPX<sup>2</sup>™ Polymer - up to 40% lighter
- Waterproof O-ring seal
- User-customizable Pick N Pluck™ foam
- Waterproof, crushproof, dustproof
- IP67 & MIL-SPEC certified



### DIMENSIONS

<b>Interior (LxWxD)</b>	32.06 x 15.87" x 13.42 (81.4 x 40.3 x 34.1 cm)
<b>Exterior (LxWxD)</b>	35.29 x 19.00" x 15.08 (89.6 x 48.3 x 38.3 cm)
<b>Lid Depth</b>	1.98" (5 cm)
<b>Bottom Depth</b>	11.44" (29.1 cm)
<b>Total Depth</b>	13.42" (34.1 cm)
<b>Int Volume</b>	3.95 ft <sup>3</sup> (0.112 m <sup>3</sup> )
<b>Padlock Hole Diameter</b>	0.31" (0.8 cm)

### MATERIALS

<b>Body</b>	Proprietary Polypropylene Blend
<b>Latch</b>	ABS
<b>O-Ring</b>	EPDM
<b>Purge Body</b>	ABS
<b>Purge Vent</b>	Hi-Flow Gore-Tex 3 Micron Hydrophobic Non-Woven

### COLOURS

■ Black

### WEIGHT

<b>Weight With Foam</b>	25.70 lbs (11.7 kg)
<b>Weight Empty</b>	20.50 lbs (9.3 kg)
<b>Buoyancy</b>	263.00 lbs (119.3 kg)

## TEMPERATURE

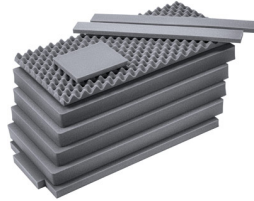
---

**Minimum Temperature** -60°F (-51.1 °C)

**Maximum Temperature** 160°F (71.1 °C)

## ACCESSORIES

---



**1646AirFS**  
9 pc. Replacement Foam Set

---

### **Peli**

c/ Provença, 388, Planta 7 • Barcelona, Spain 08025 • Phone: +34 934 674 999

[info@peli.com](mailto:info@peli.com) • [www.peli.com](http://www.peli.com)

*Document created on 10-31-24*