



# 1646

## Air

Peli understands that finding the right protection, with the perfect fit for your gear, is a priority. Peli™ Air began with long protection and quickly grew to offer you deep protection. The time has come to combine those two in order to create Peli's new Long/Deep Series. Gone are the days of dangerously forcing your equipment into the wrong size case or leaving it unprotected with no other options. With Peli's Long/Deep series, we've created the missing link so that no matter the demands of your gear, Peli has you covered.

- Automatic pressure equalization valve - balances interior pressure, keeps water out
- Fold down over-molded handle
- Retractable extension trolley handle
- Stainless steel padlock protectors
- Business card holder
- Quiet rolling stainless-steel bearing wheels
- Press and Pull™ Latches
- Limited Lifetime Warranty
- Super-light proprietary HPX<sup>2</sup>™ Polymer - up to 40% lighter
- Waterproof O-ring seal
- User-customizable Pick N Pluck™ foam
- Waterproof, crushproof, dustproof
- IP67 & MIL-SPEC certified



## DIMENSIONS

|                              |  |
|------------------------------|--|
| <b>Interior (LxWxD)</b>      | 32.06 x 15.87" x 13.42 (81.4 x 40.3 x 34.1 cm) |
| <b>Exterior (LxWxD)</b>      | 35.29 x 19.00" x 15.08 (89.6 x 48.3 x 38.3 cm) |
| <b>Lid Depth</b>             | 1.98" (5 cm)                                   |
| <b>Bottom Depth</b>          | 11.44" (29.1 cm)                               |
| <b>Total Depth</b>           | 13.42" (34.1 cm)                               |
| <b>Int Volume</b>            | 3.95 ft <sup>3</sup> (0.112 m <sup>3</sup> )   |
| <b>Padlock Hole Diameter</b> | 0.31" (0.8 cm)                                 |

## MATERIALS

|                   |   |
|-------------------|---|
| <b>Body</b>       | Proprietary Polypropylene Blend                 |
| <b>Latch</b>      | ABS   |
| <b>O-Ring</b>     | EPDM  |
| <b>Purge Body</b> | ABS   |
| <b>Purge Vent</b> | Hi-Flow Gore-Tex 3 Micron Hydrophobic Non-Woven |

## COLOURS

■ Black

## WEIGHT

|                         |                       |
|-------------------------|-----------------------|
| <b>Weight With Foam</b> | 25.70 lbs (11.7 kg)   |
| <b>Weight Empty</b>     | 20.50 lbs (9.3 kg)    |
| <b>Buoyancy</b>         | 263.00 lbs (119.3 kg) |

## TEMPERATURE

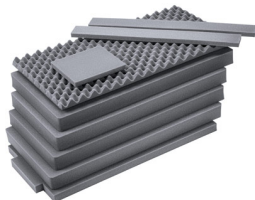
---

**Minimum Temperature** -60°F (-51.1 °C)

**Maximum Temperature** 160°F (71.1 °C)

## ACCESSORIES

---



### **1646AirFS**

9 pc. Replacement Foam Set

---

### **Peli**

c/ Provença, 388, Planta 7 • Barcelona, Spain 08025 • Phone: +34 934 674 999

[info@peli.com](mailto:info@peli.com) • [www.peli.com](http://www.peli.com)

*Document created on 05-16-24*