



1670 Protector

Sensitive equipment needs protection, and since 1976 the answer has been the Peli™ Protector Case. These cases are designed rugged, and travel the harshest environments on earth. Against the extreme cold of the arctic or the heat of battle, Peli cases have survived. Made in the USA, these tough cases are designed with an automatic purge valve, that equalizes air pressure, a watertight silicone O-ring lid, over-molded rubber handles and stainless steel hardware.

- **4 strong polyurethane wheels with stainless steel bearings**
- **Watertight, crushproof, and dustproof**
- 2 level Pick N Pluck™ with convoluted lid foam
- Automatic pressure equalization valve - balances interior pressure, keeps water out
- Easy open double-throw latches
- O-ring seal
- Open cell core with solid wall design - strong, light weight
- Retractable extension trolley handle
- Stainless steel hardware and padlock protectors
- Two oversized fold down handles for extra grip
- Peli's legendary lifetime guarantee**
- * Where applicable by law



CONFIGURATIONS



1670
Standard



1670NF
No Foam



1670WF
With Foam



1674
With Padded Dividers

DIMENSIONS

Interior (L×W×D)	28.10 x 16.49" x 9.19 (71.4 x 41.9 x 23.3 cm)
Exterior (L×W×D)	31.04 x 19.39" x 11.17 (78.8 x 49.3 x 28.4 cm)
Lid Depth	1.80" (4.6 cm)
Bottom Depth	7.39" (18.8 cm)
Total Depth	9.19" (23.3 cm)
Int Volume	2.46 ft³ (0.07 m³)
Padlock Hole Diameter	0.31" (0.8 cm)

MATERIALS

Body	Polypropylene
Latch	ABS
O-Ring	Polymer
Pins	Stainless Steel

Foam	1.3 lb Polyurethane
Purge Body	ABS
Purge Vent	3 Micron Hydrophobic Non-Woven

COLOURS

■ Black

WEIGHT

Weight With Foam	26.00 lbs (11.8 kg)
Weight Empty	23.00 lbs (10.4 kg)
Buoyancy	182.00 lbs (82.6 kg)
Master Pack Weight	49.00 lbs (22.2 kg)

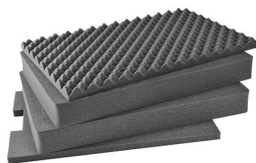
TEMPERATURE

Minimum Temperature	-40°F (-40 °C)
Maximum Temperature	210°F (98.9 °C)

OTHER

Wheels	4
Master Pack	1

ACCESSORIES



1671
4 pc. Replacement Foam Set



1507
Quick Mounts - set of 4



1506TSA
TSA Lock



1500D
Desiccant Silica Gel

Peli

c/ Provença, 388, Planta 7 • Barcelona, Spain 08025 • Phone: +34 934 674 999
info@peli.com • www.peli.com

Document created on 05-20-24